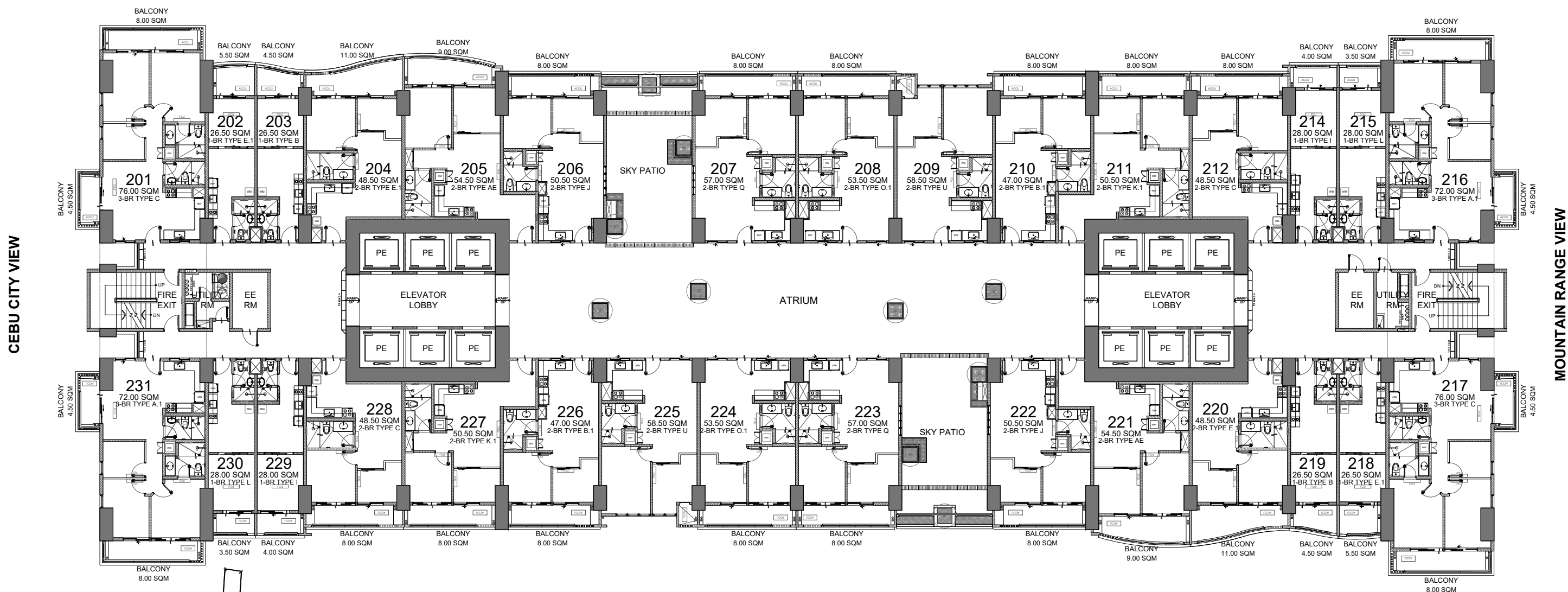
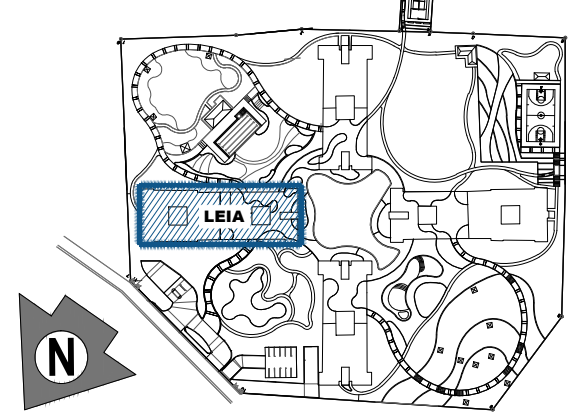


FACING AMENITIES
(MACTAN CHANNEL VIEW)



FACING AMENITIES
(MOUNTAIN RANGE VIEW)



KEYPLAN

LEIA
2ND FLOOR PLAN
SEPTEMBER 2024
PER MEMO REF. DE-24-09-002

LIST FOR POSSIBLE TANDEM UNITS:

- 208 & 209
- 224 & 225

NOTE:

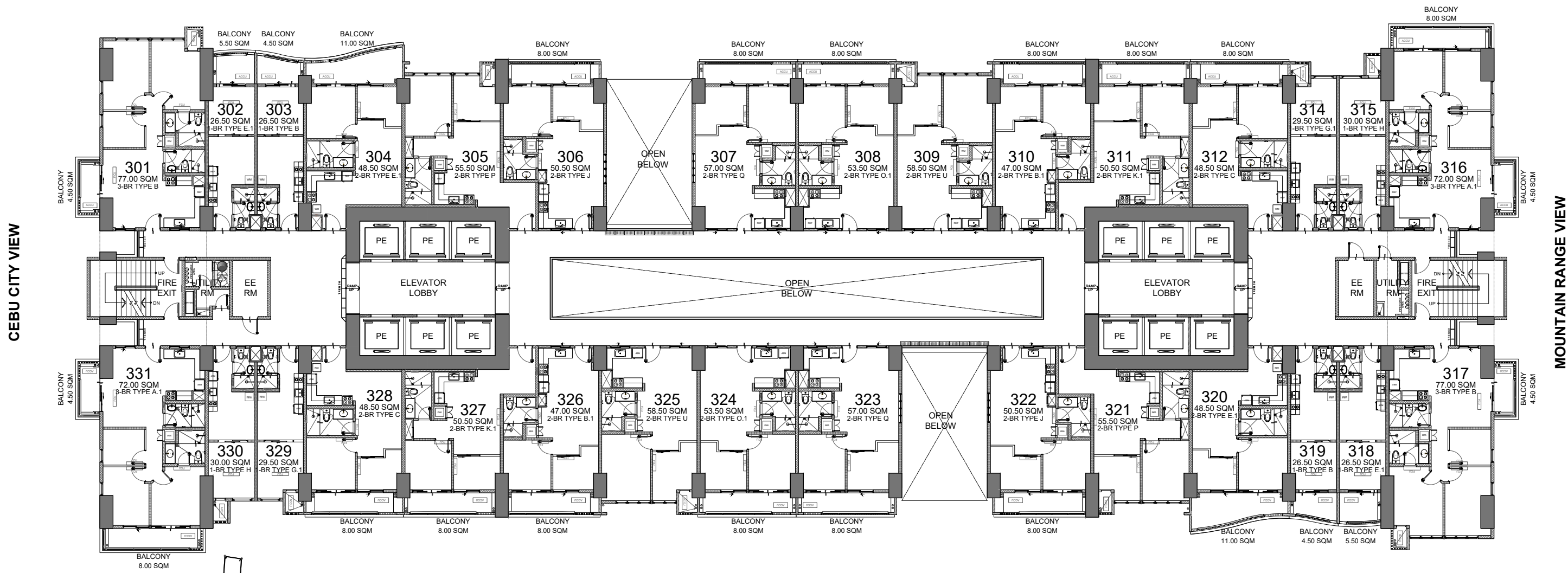
Standard company policy regarding request for tandem shall apply.



NOTED BY:	ADI	08/09
	PINKY	9Aug'24
	ANA	8/9



FACING AMENITIES
(MACTAN CHANNEL VIEW)



CEBU CITY VIEW

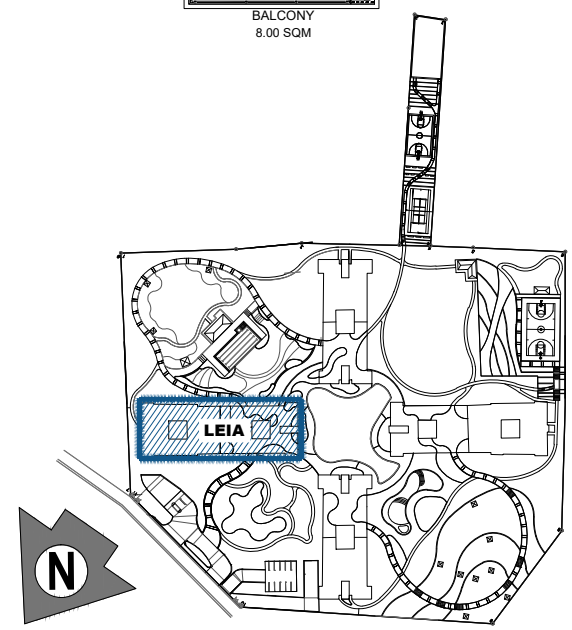
MOUNTAIN RANGE VIEW

FACING AMENITIES
(MOUNTAIN RANGE VIEW)

LIST FOR POSSIBLE TANDEM UNITS:

- 308 & 309
- 324 & 325

NOTE:
Standard company policy regarding request for tandem shall apply.



KEYPLAN

LEIA
3RD FLOOR PLAN
SEPTEMBER 2024
PER MEMO REF. DE-24-09-002



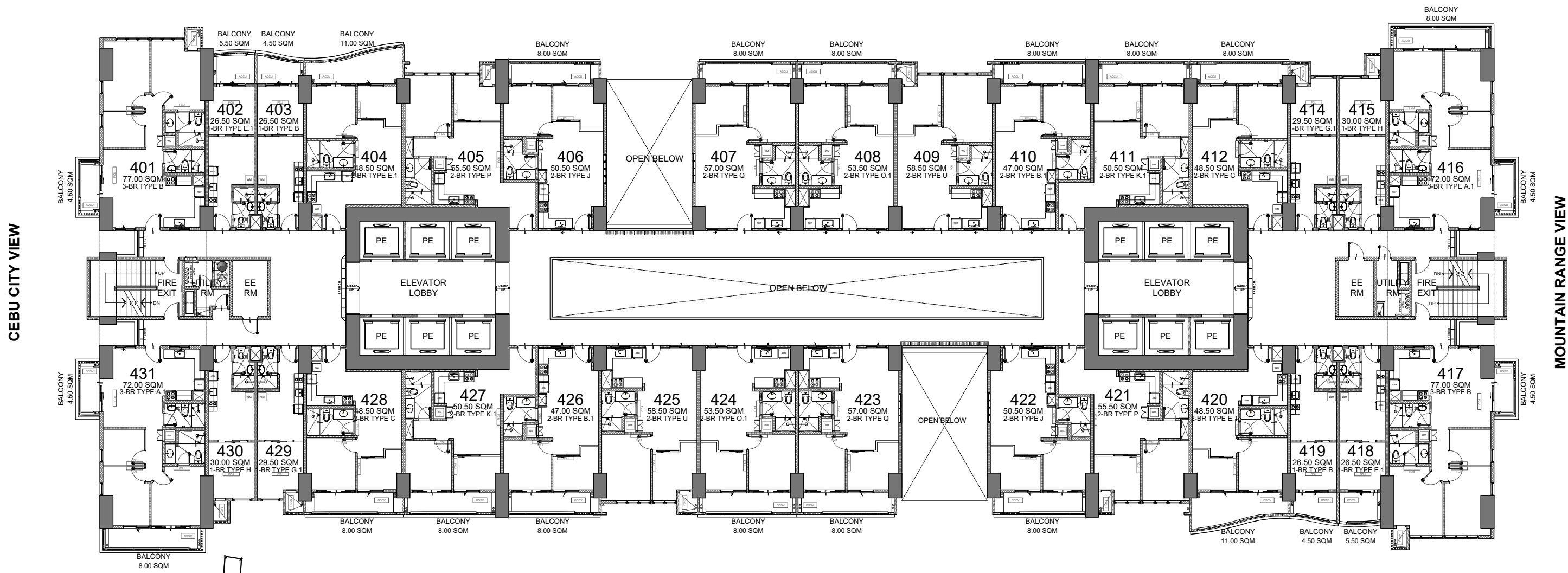
NOTED BY:	ADI	08/09
	PINKY	09 Aug'24
	ANA	8/9



Disclaimer: Floor plans depicted in this material are for demonstration purposes only and should not be relied upon as final project plans. For announcement purposes only.

AVAILABILITY PLAN

FACING AMENITIES
(MACTAN CHANNEL VIEW)



FACING AMENITIES
(MOUNTAIN RANGE VIEW)

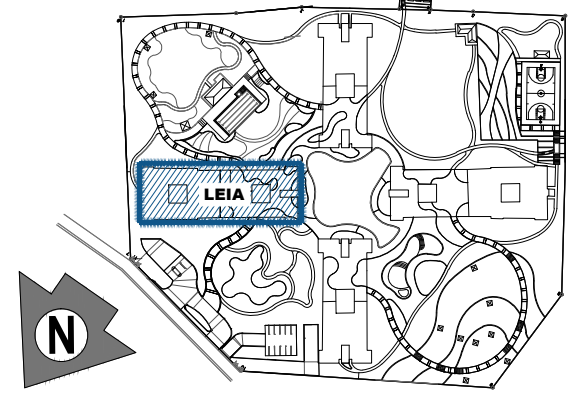
LIST FOR POSSIBLE TANDEM UNITS:

- 408 & 409
- 424 & 425

NOTE:
Standard company policy regarding request for tandem shall apply.

LEIA
4TH FLOOR PLAN
SEPTEMBER 2024

PER MEMO REF. DE-24-09-002



KEYPLAN

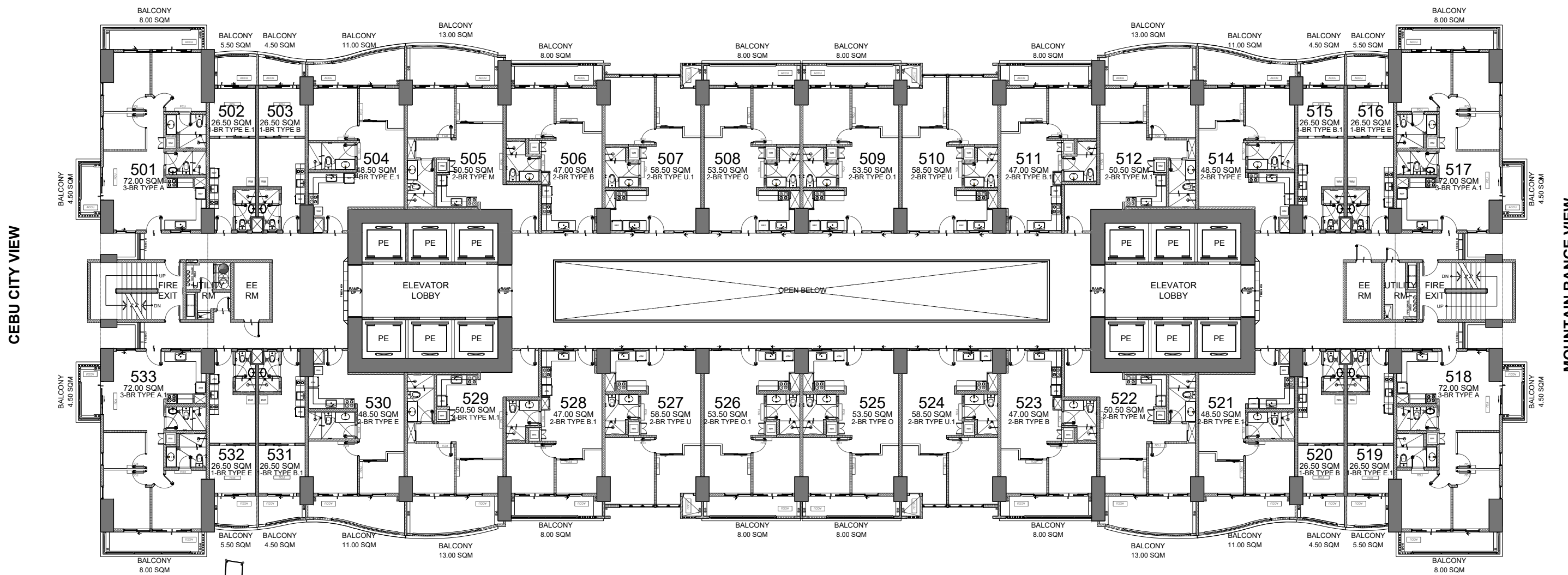


NOTED BY:	ADI	08/09
	PINKY	9Aug'24
	ANA	8/9

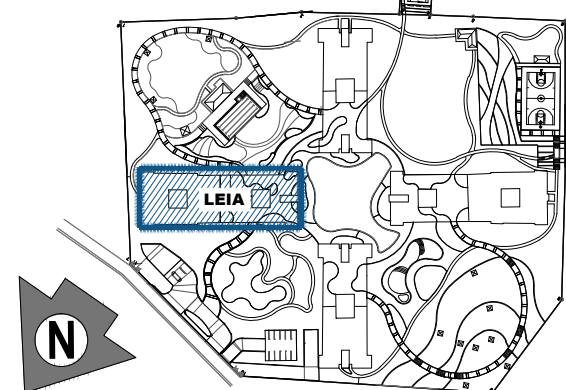
Disclaimer: Floor plans depicted in this material are for demonstration purposes only and should not be relied upon as final project plans. For announcement purposes only.

AVAILABILITY PLAN

FACING AMENITIES
(MACTAN CHANNEL VIEW)



FACING AMENITIES
(MOUNTAIN RANGE VIEW)



LEIA
5TH FLOOR PLAN
SEPTEMBER 2024
PER MEMO REF. DE-24-09-002

LIST FOR POSSIBLE TANDEM UNITS:

- 507 & 508
- 509 & 510
- 524 & 525
- 526 & 527

NOTE:
Standard company policy regarding request for tandem shall apply.



KEYPLAN

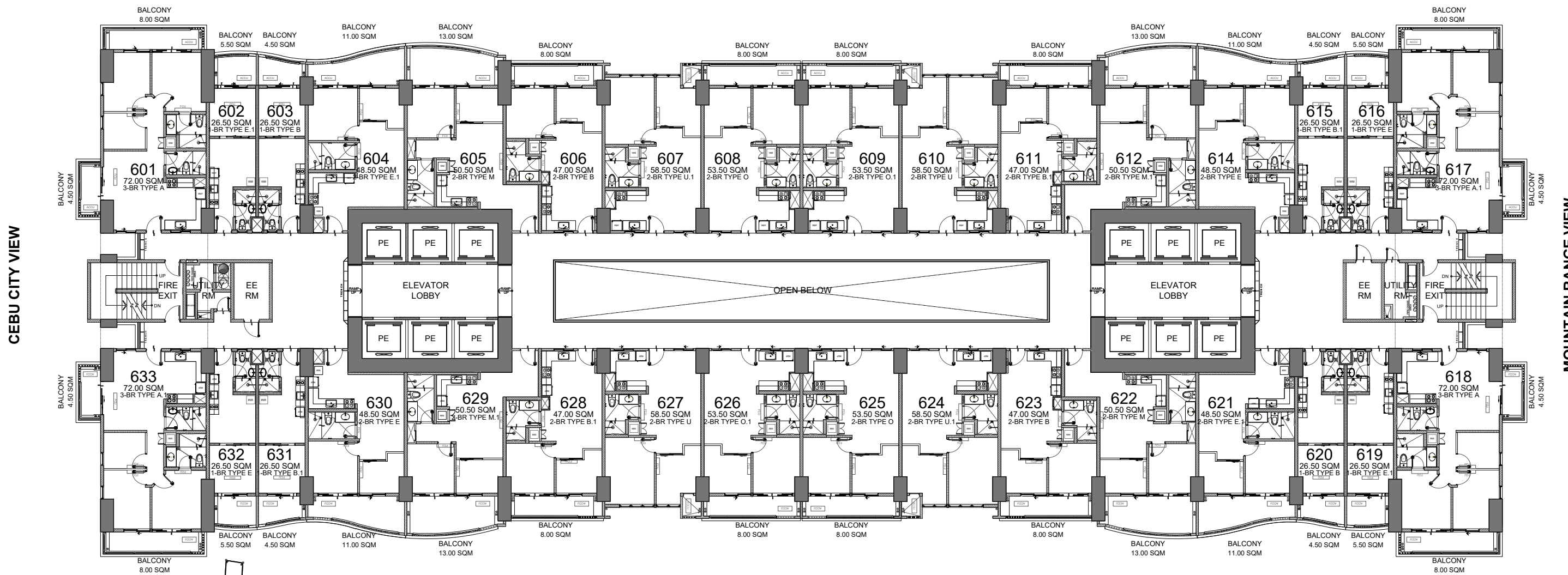


NOTED BY:	ADI	08/09
	PINKY	9Aug'24
	ANA	8/9

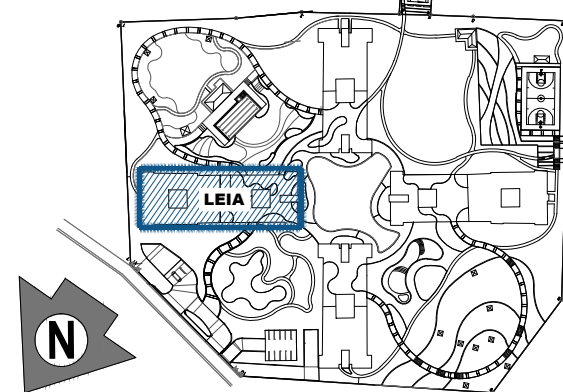
Disclaimer: Floor plans depicted in this material are for demonstration purposes only and should not be relied upon as final project plans. For announcement purposes only.

AVAILABILITY PLAN

FACING AMENITIES
(MACTAN CHANNEL VIEW)



FACING AMENITIES
(MOUNTAIN RANGE VIEW)



KEYPLAN

LEIA
6TH FLOOR PLAN
SEPTEMBER 2024
PER MEMO REF. DE-24-09-002

LIST FOR POSSIBLE TANDEM UNITS:

- 607 & 608
- 609 & 610
- 624 & 625
- 626 & 627

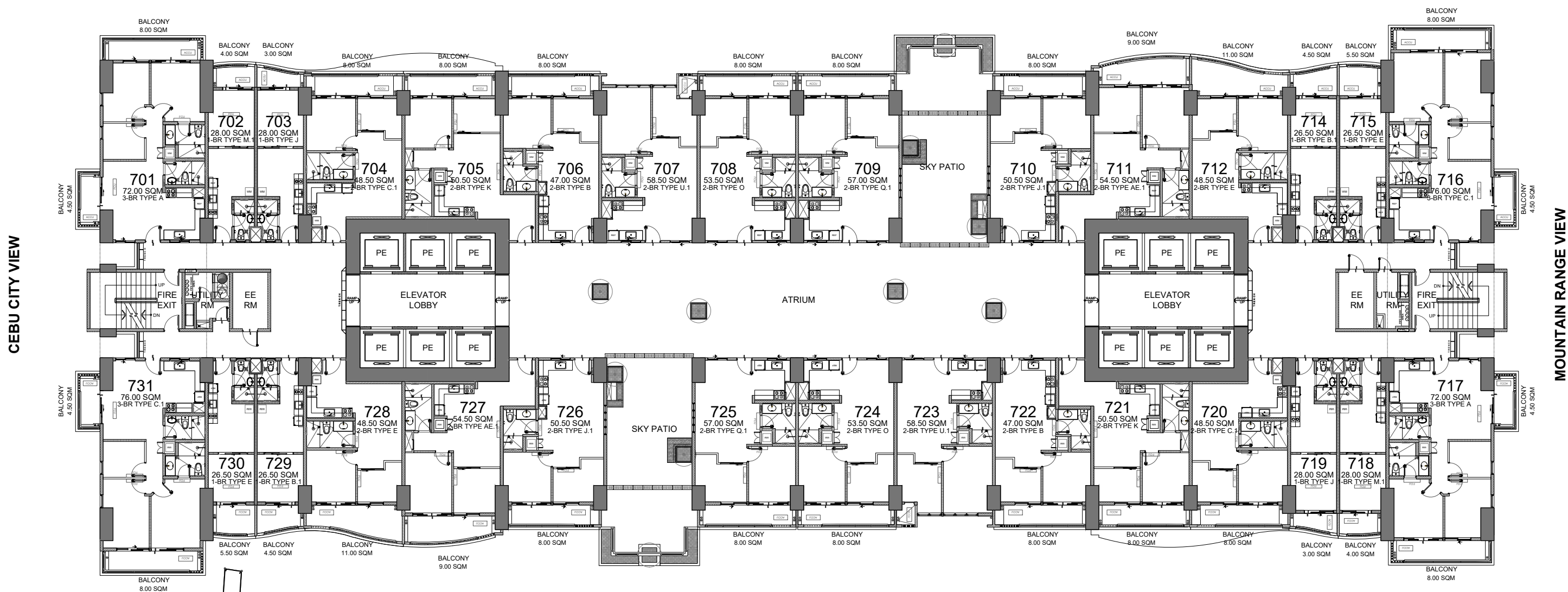
NOTE:
Standard company policy regarding request for tandem shall apply.



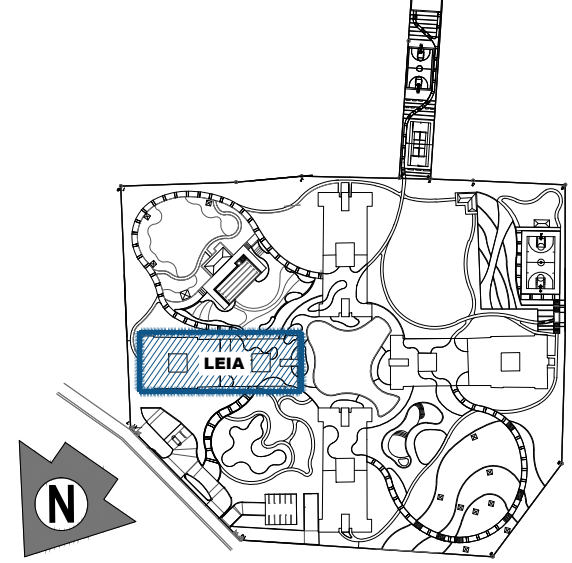
NOTED BY:	ADI	<i>[Signature]</i>	08/09
	PINKY	<i>[Signature]</i>	9Aug'24
	ANA	<i>[Signature]</i>	8/9



FACING AMENITIES
(MACTAN CHANNEL VIEW)



FACING AMENITIES
(MOUNTAIN RANGE VIEW)



LIST FOR POSSIBLE TANDEM UNITS:
707 & 708
723 & 724

NOTE:
Standard company policy regarding request for tandem shall apply.

LEIA
7TH FLOOR PLAN
SEPTEMBER 2024
PER MEMO REF. DE-24-09-002

KEYPLAN



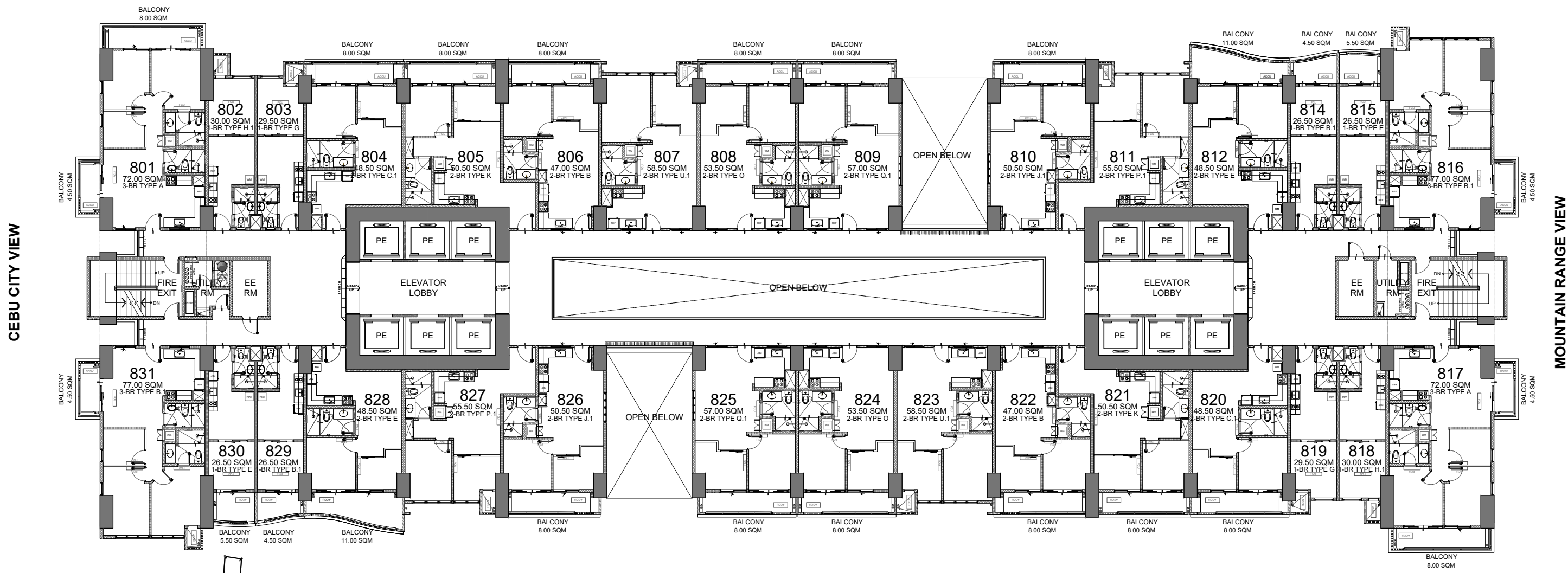
NOTED BY:	ADI	<i>[Signature]</i>	08/09
	PINKY	<i>[Signature]</i>	9Aug'24
	ANA	<i>[Signature]</i>	8/9

Disclaimer: Floor plans depicted in this material are for demonstration purposes only and should not be relied upon as final project plans. For announcement purposes only.



AVAILABILITY PLAN

FACING AMENITIES
(MACTAN CHANNEL VIEW)



CEBU CITY VIEW

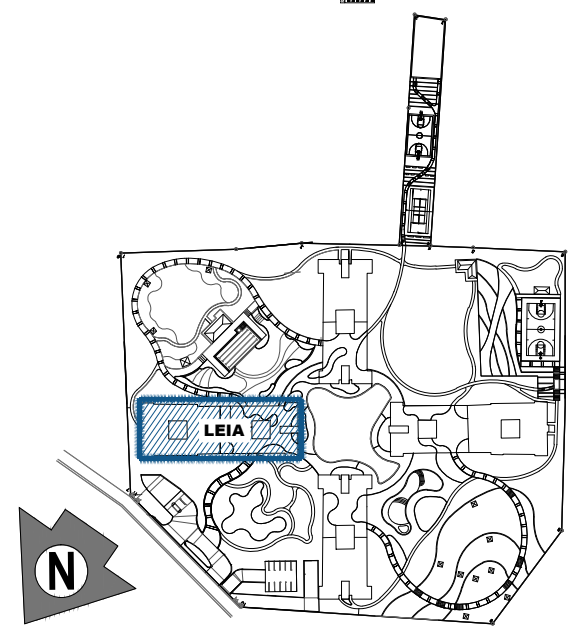
MOUNTAIN RANGE VIEW

FACING AMENITIES
(MOUNTAIN RANGE VIEW)

LIST FOR POSSIBLE TANDEM UNITS:

- 807 & 808
- 823 & 824

NOTE:
Standard company policy regarding request for tandem shall apply.



LEIA
8TH FLOOR PLAN
SEPTEMBER 2024
PER MEMO REF. DE-24-09-002



KEYPLAN

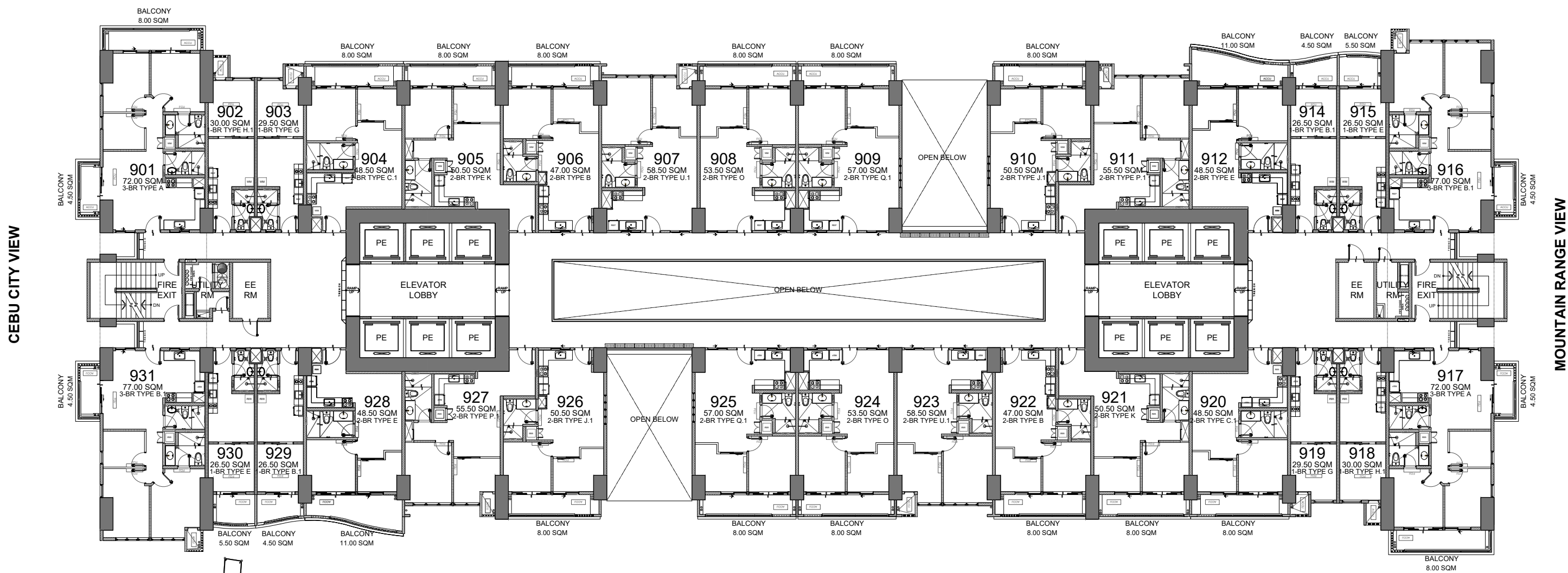


NOTED BY:	ADI	08/09
	PINKY	9Aug'24
	ANA	8/9

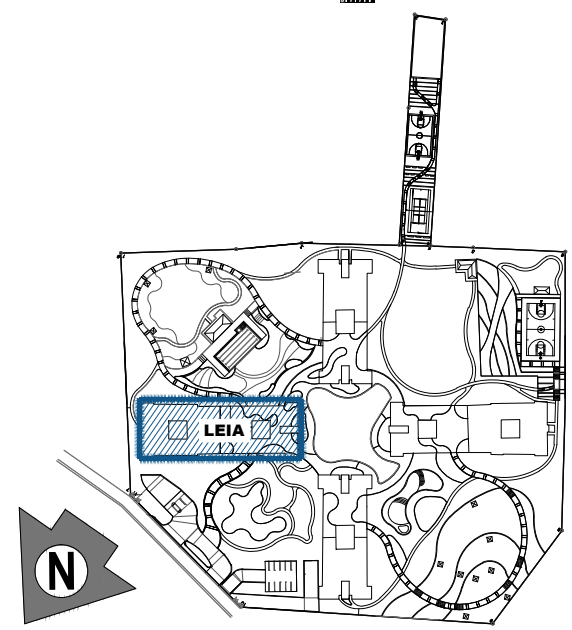
Disclaimer: Floor plans depicted in this material are for demonstration purposes only and should not be relied upon as final project plans. For announcement purposes only.

AVAILABILITY PLAN

FACING AMENITIES
(MACTAN CHANNEL VIEW)



FACING AMENITIES
(MOUNTAIN RANGE VIEW)



KEYPLAN

LEIA
9TH FLOOR PLAN
SEPTEMBER 2024
PER MEMO REF. DE-24-09-002

LIST FOR POSSIBLE TANDEM UNITS:

- 907 & 908
- 923 & 924

NOTE:
Standard company policy regarding request for tandem shall apply.

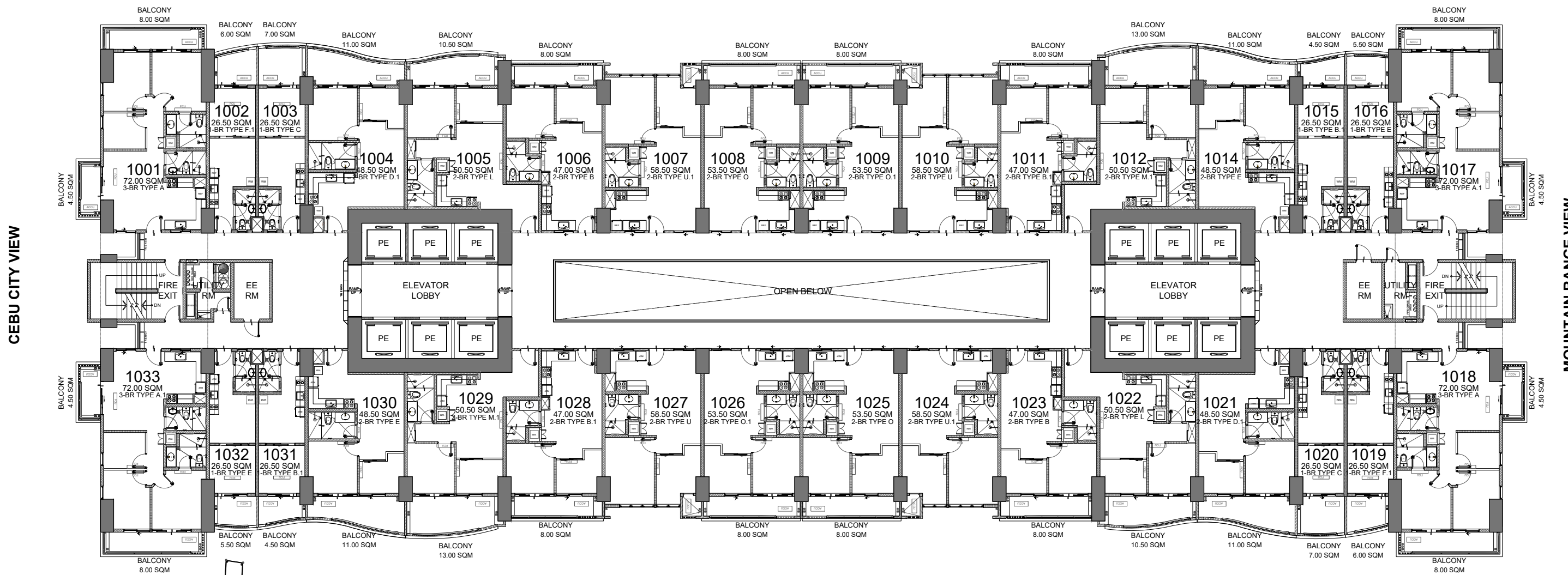


NOTED BY:	ADI	08/09
	PINKY	9Aug'24
	ANA	8/9

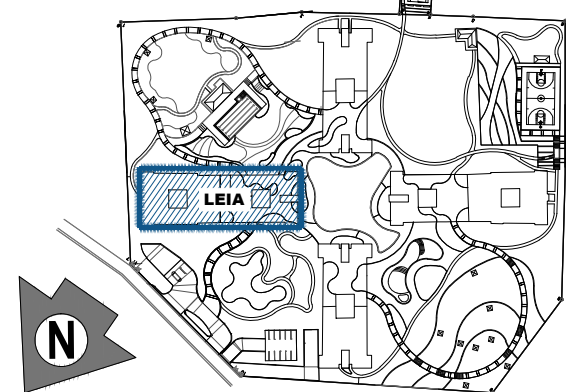


Disclaimer: Floor plans depicted in this material are for demonstration purposes only and should not be relied upon as final project plans. For announcement purposes only.

FACING AMENITIES
(MACTAN CHANNEL VIEW)



FACING AMENITIES
(MOUNTAIN RANGE VIEW)



KEYPLAN

LEIA
10TH FLOOR PLAN
SEPTEMBER 2024
PER MEMO REF. DE-24-09-002

LIST FOR POSSIBLE TANDEM UNITS:

- 1007 & 1008
- 1009 & 1010
- 1024 & 1024
- 1026 & 1027

NOTE:
Standard company policy regarding request for tandem shall apply.



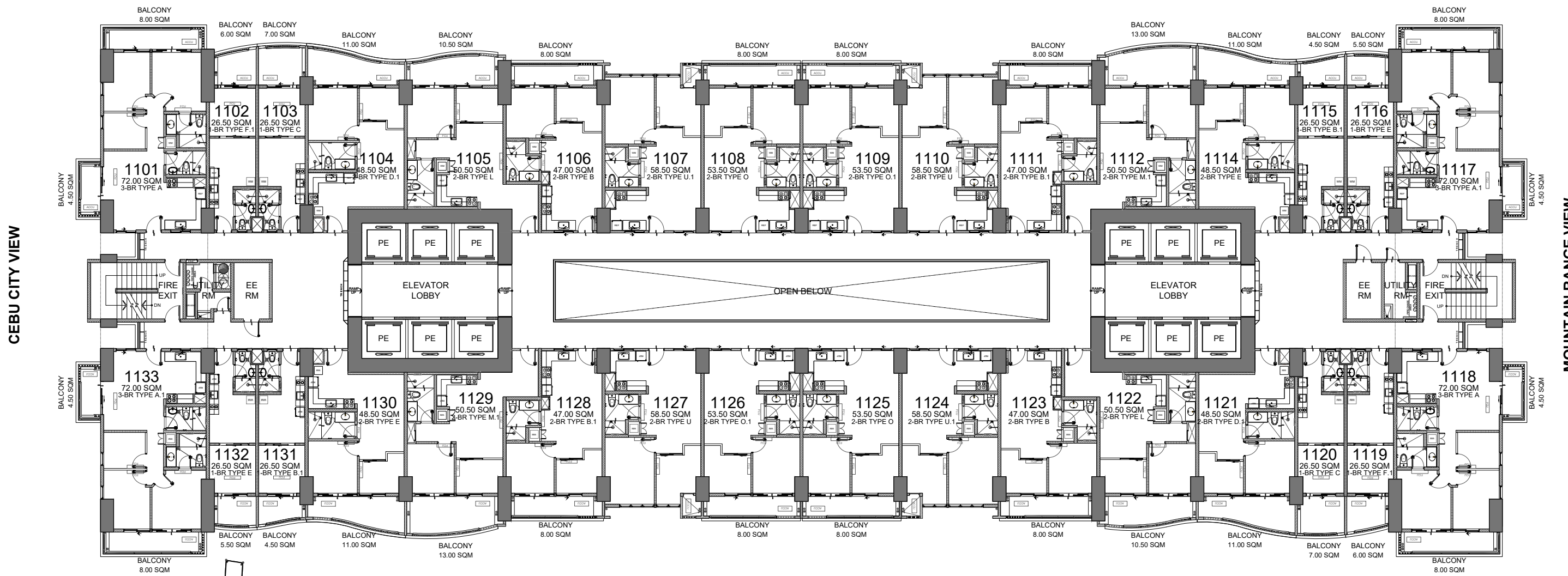
NOTED BY:	ADI	08/09
	PINKY	19 Aug '24
	ANA	8/5



Disclaimer: Floor plans depicted in this material are for demonstration purposes only and should not be relied upon as final project plans. For announcement purposes only.

AVAILABILITY PLAN

FACING AMENITIES
(MACTAN CHANNEL VIEW)

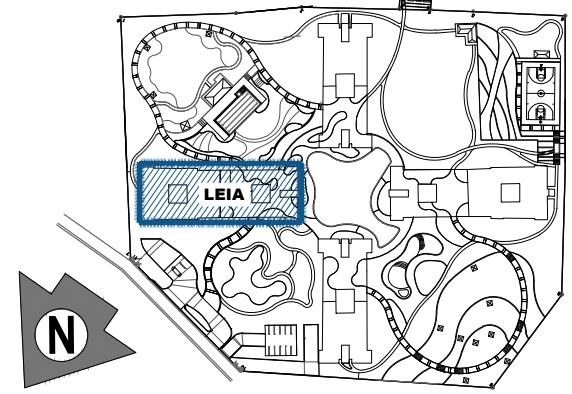


FACING AMENITIES
(MOUNTAIN RANGE VIEW)

LIST FOR POSSIBLE TANDEM UNITS:

- 1107 & 1108
- 1109 & 1110
- 1124 & 1125
- 1126 & 1127

NOTE:
Standard company policy regarding request for tandem shall apply.



LEIA
11TH FLOOR PLAN
SEPTEMBER 2024
PER MEMO REF. DE-24-09-002

KEYPLAN



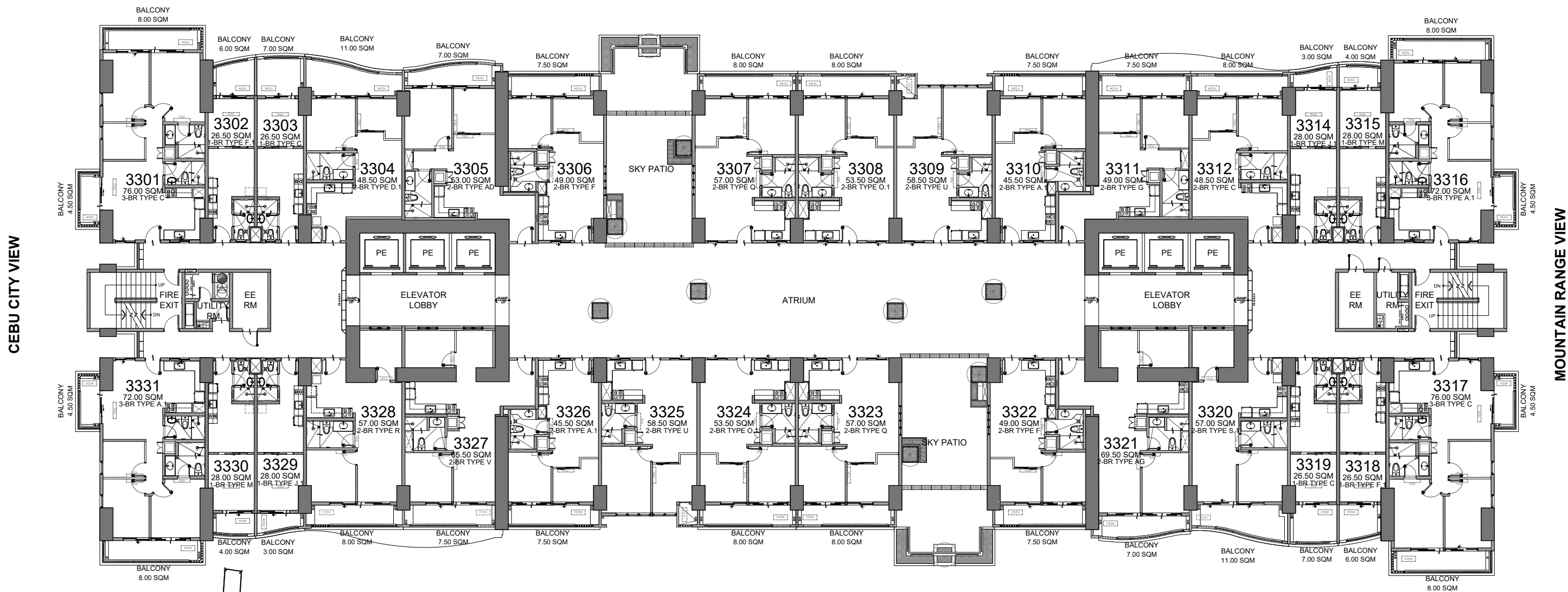
NOTED BY:	ADI	08/09
	PINKY	9Aug'24
	ANA	8/9

Disclaimer: Floor plans depicted in this material are for demonstration purposes only and should not be relied upon as final project plans. For announcement purposes only.

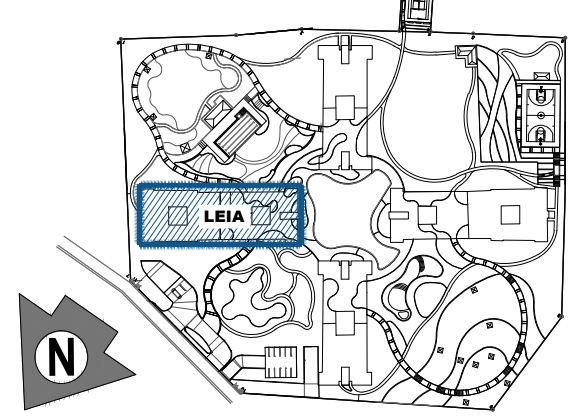


AVAILABILITY PLAN

FACING AMENITIES
(MACTAN CHANNEL VIEW)



FACING AMENITIES
(MOUNTAIN RANGE VIEW)



KEYPLAN

LIST FOR POSSIBLE TANDEM UNITS:

- 3308 & 3309
- 3324 & 3325

NOTE:
Standard company policy regarding request for tandem shall apply.

LEIA
33RD FLOOR PLAN
SEPTEMBER 2024
PER MEMO REF. DE-24-09-002

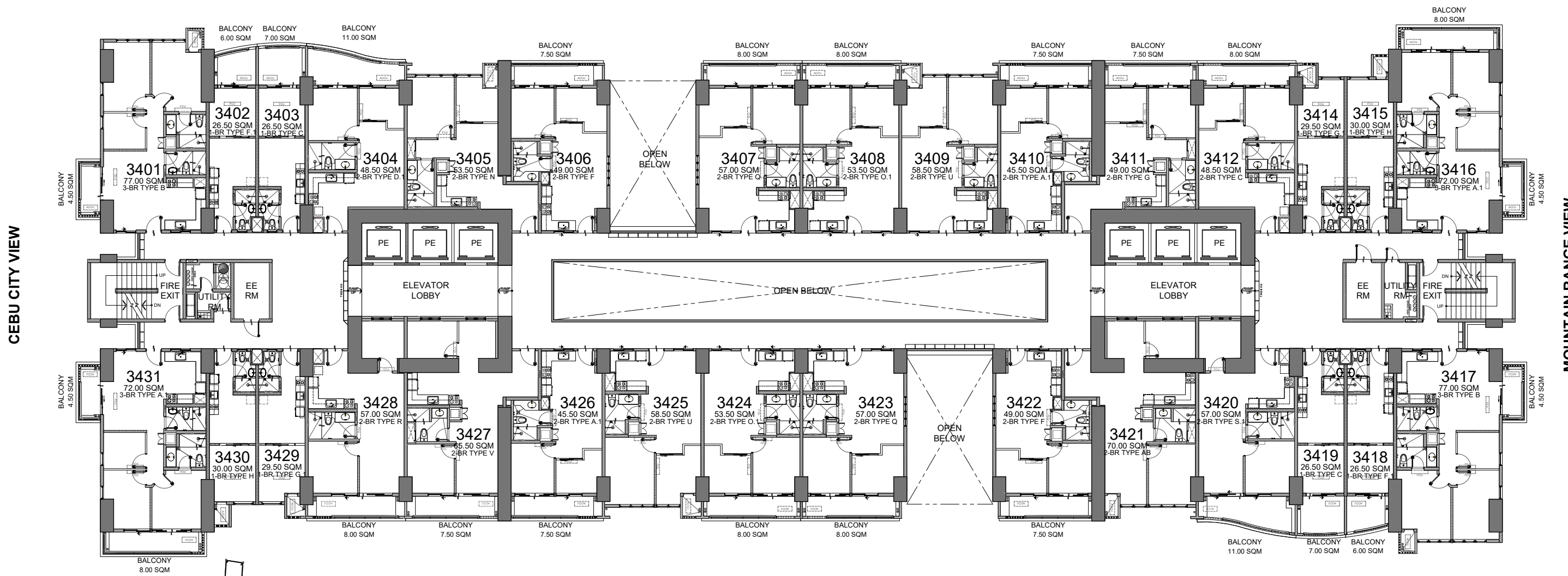


NOTED BY:	ADI	08/09
	PINKY	9Aug'24
	ANA	8/9



Disclaimer: Floor plans depicted in this material are for demonstration purposes only and should not be relied upon as final project plans. For announcement purposes only.

FACING AMENITIES
(MACTAN CHANNEL VIEW)



CEBU CITY VIEW

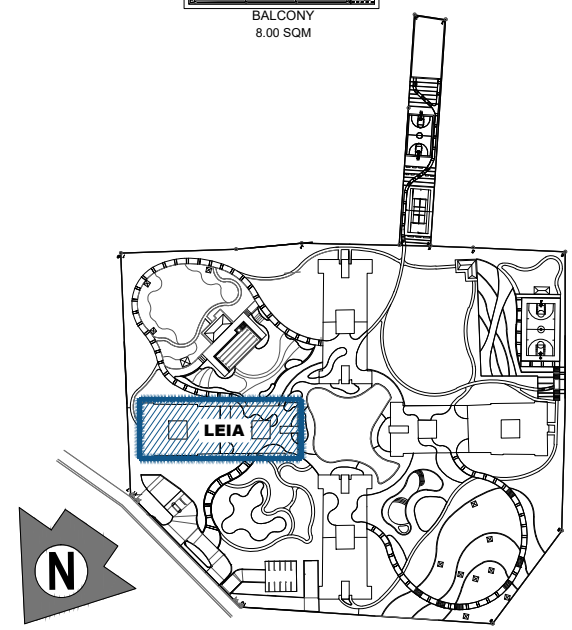
MOUNTAIN RANGE VIEW

FACING AMENITIES
(MOUNTAIN RANGE VIEW)

LIST FOR POSSIBLE TANDEM UNITS:

- 3408 & 3409
- 3424 & 3425

NOTE:
Standard company policy regarding request for tandem shall apply.



LEIA
34TH FLOOR PLAN
SEPTEMBER 2024
PER MEMO REF. DE-24-09-002



KEYPLAN

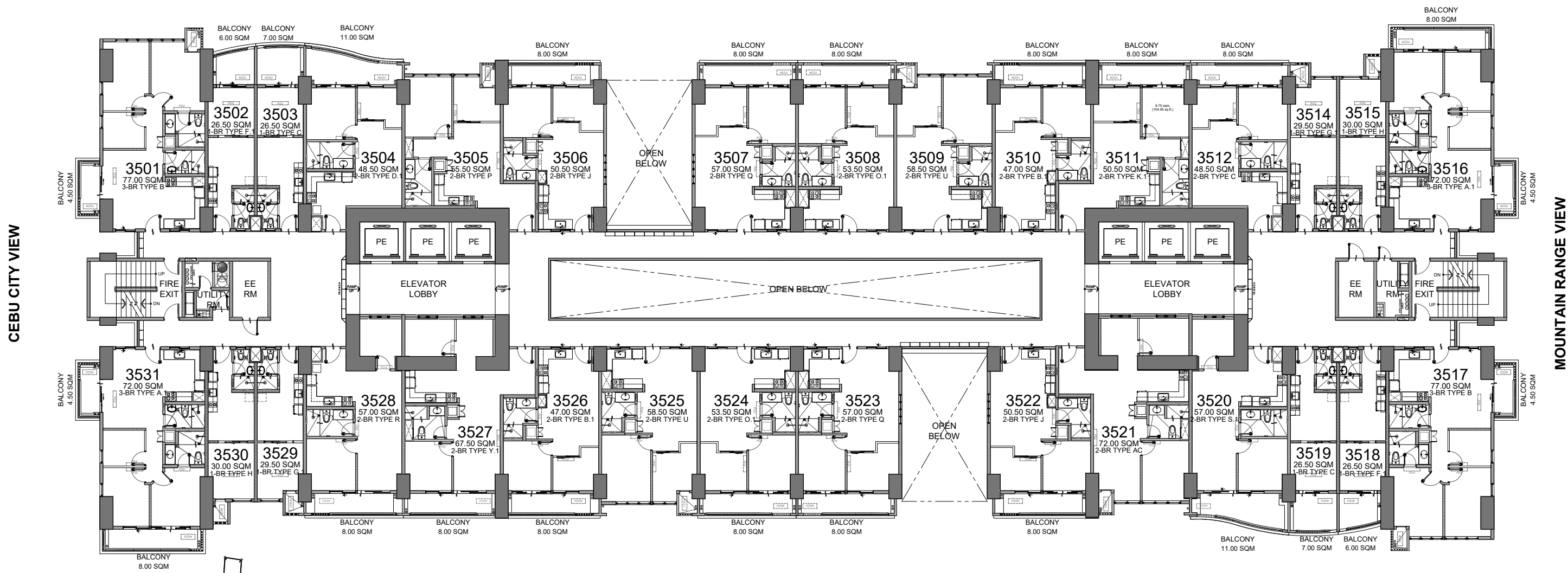
NOTED BY:	ADI	08/09
	PINKY	9 Aug '24
	ANA	8/9



Disclaimer: Floor plans depicted in this material are for demonstration purposes only and should not be relied upon as final project plans. For announcement purposes only.

AVAILABILITY PLAN

FACING AMENITIES
(MACTAN CHANNEL VIEW)



CEBU CITY VIEW

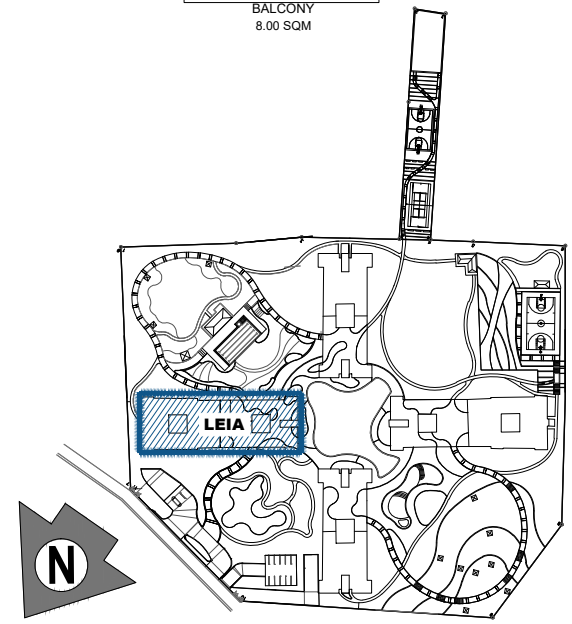
MOUNTAIN RANGE VIEW

FACING AMENITIES
(MOUNTAIN RANGE VIEW)

LIST FOR POSSIBLE TANDEM UNITS:

- 3508 & 3509
- 3524 & 3525

NOTE:
Standard company policy regarding request for tandem shall apply.



LEIA
35TH FLOOR PLAN
SEPTEMBER 2024
PER MEMO REF. DE-24-09-002



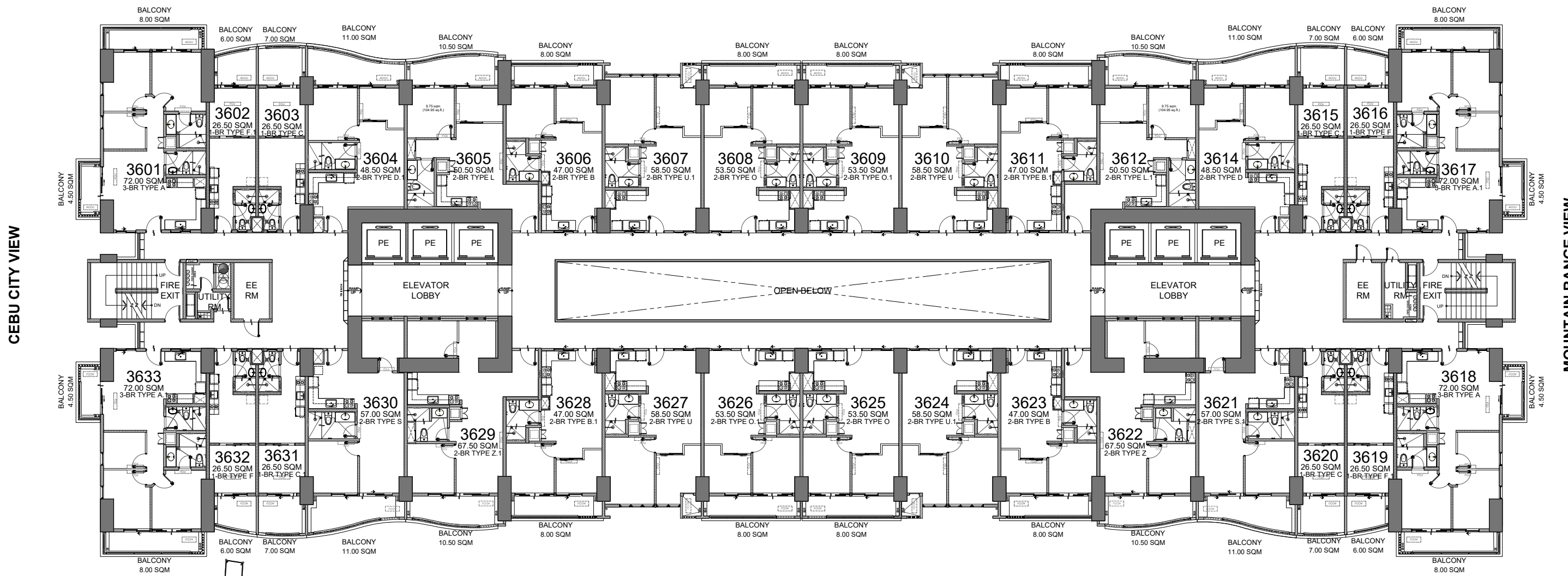
KEYPLAN

DMCI HOMES Feels real good to be home	NOTED BY:	ADI	08/09
		PINKY	09 Aug '24
		ANA	8/9

Disclaimer: Floor plans depicted in this material are for demonstration purposes only and should not be relied upon as final project plans. For announcement purposes only.

AVAILABILITY PLAN

FACING AMENITIES
(MACTAN CHANNEL VIEW)

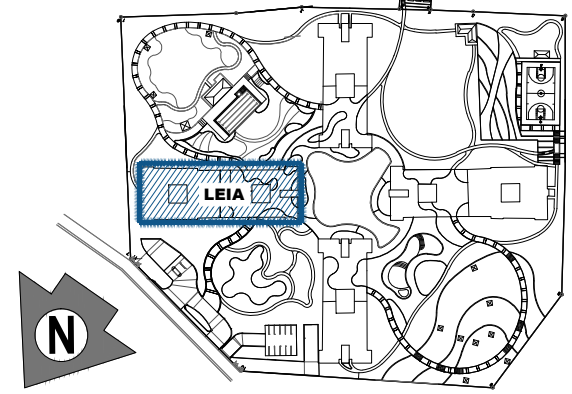


FACING AMENITIES
(MOUNTAIN RANGE VIEW)

LIST FOR POSSIBLE TANDEM UNITS:

- 3607 & 3608
- 3609 & 3610
- 3624 & 3625
- 3626 & 3627

NOTE:
Standard company policy regarding request for tandem shall apply.



KEYPLAN

LEIA
36TH FLOOR PLAN
SEPTEMBER 2024
PER MEMO REF. DE-24-09-002



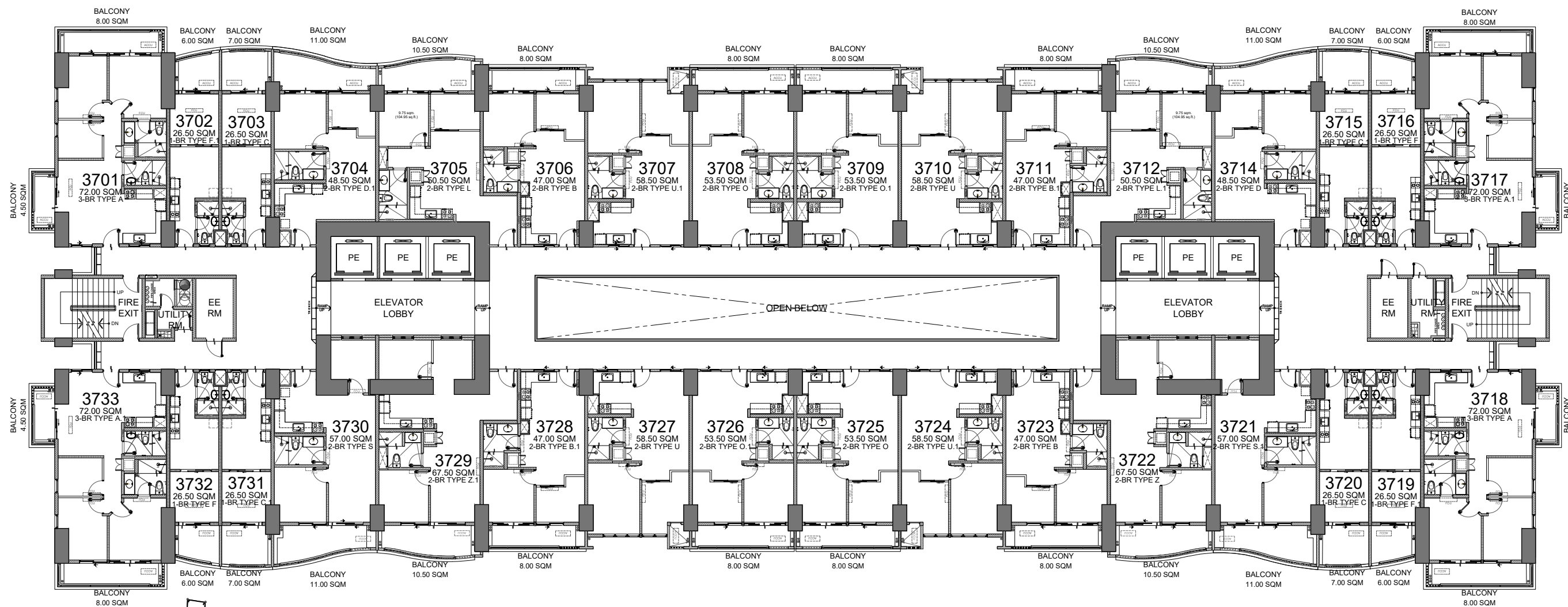
NOTED BY:	ADI	08/09
	PINKY	9 Aug '24
	ANA	8/9



Disclaimer: Floor plans depicted in this material are for demonstration purposes only and should not be relied upon as final project plans. For announcement purposes only.

AVAILABILITY PLAN

FACING AMENITIES
(MACTAN CHANNEL VIEW)



CEBU CITY VIEW

MOUNTAIN RANGE VIEW

FACING AMENITIES
(MOUNTAIN RANGE VIEW)

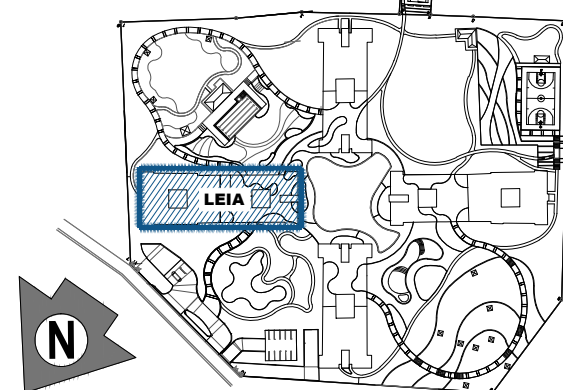
LIST FOR POSSIBLE TANDEM UNITS:

- 3707 & 3708
- 3709 & 3710
- 3724 & 3725
- 3726 & 3727

NOTE:
Standard company policy regarding request for tandem shall apply.

LEIA
37TH FLOOR PLAN

SEPTEMBER 2024
PER MEMO REF. DE-24-09-002



KEYPLAN

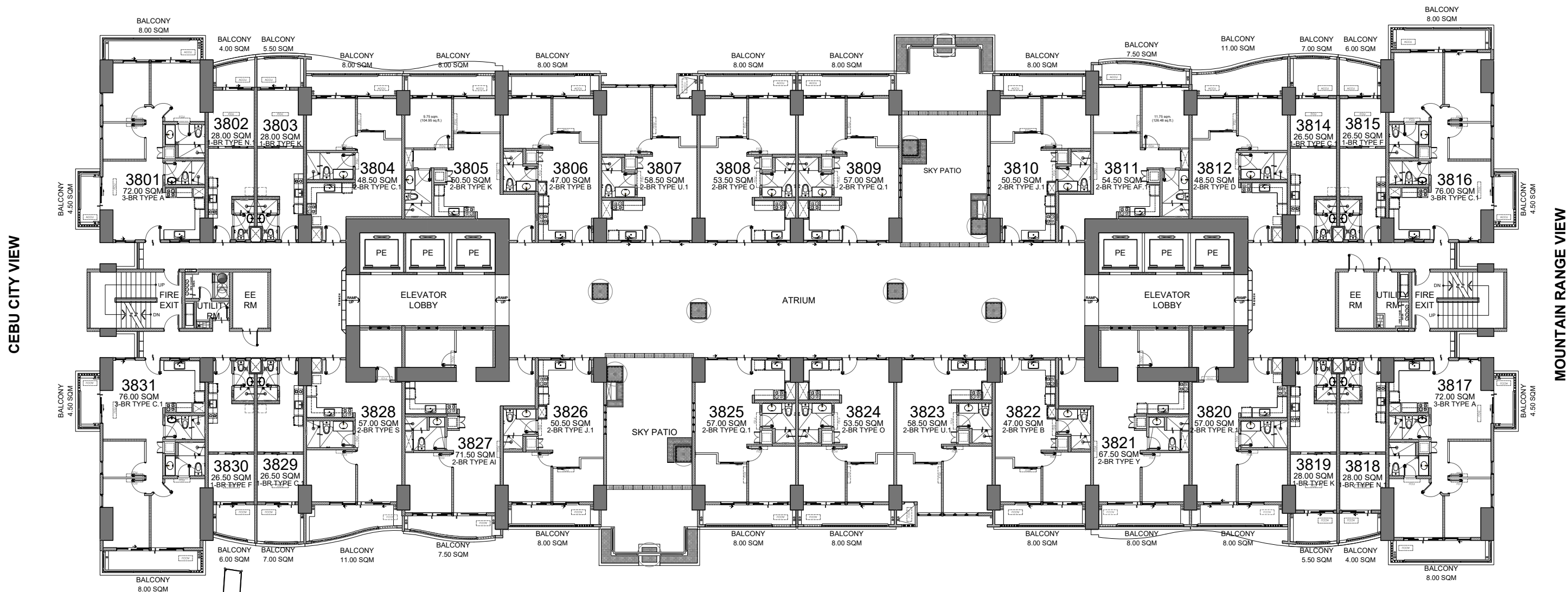


NOTED BY:	ADI	08/09
	PINKY	9 Aug '24
	ANA	SK

Disclaimer: Floor plans depicted in this material are for demonstration purposes only and should not be relied upon as final project plans. For announcement purposes only.

AVAILABILITY PLAN

FACING AMENITIES
(MACTAN CHANNEL VIEW)



FACING AMENITIES
(MOUNTAIN RANGE VIEW)

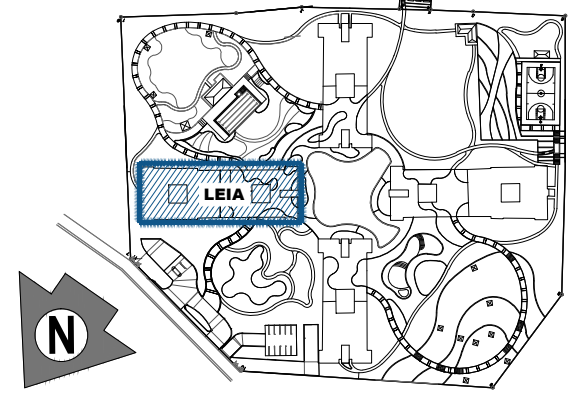
CEBU CITY VIEW

MOUNTAIN RANGE VIEW

LIST FOR POSSIBLE TANDEM UNITS:

- 3807 & 3808
- 3823 & 3824

NOTE:
Standard company policy regarding request for tandem shall apply.



KEYPLAN

LEIA
38TH FLOOR PLAN
SEPTEMBER 2024
PER MEMO REF. DE-24-09-002

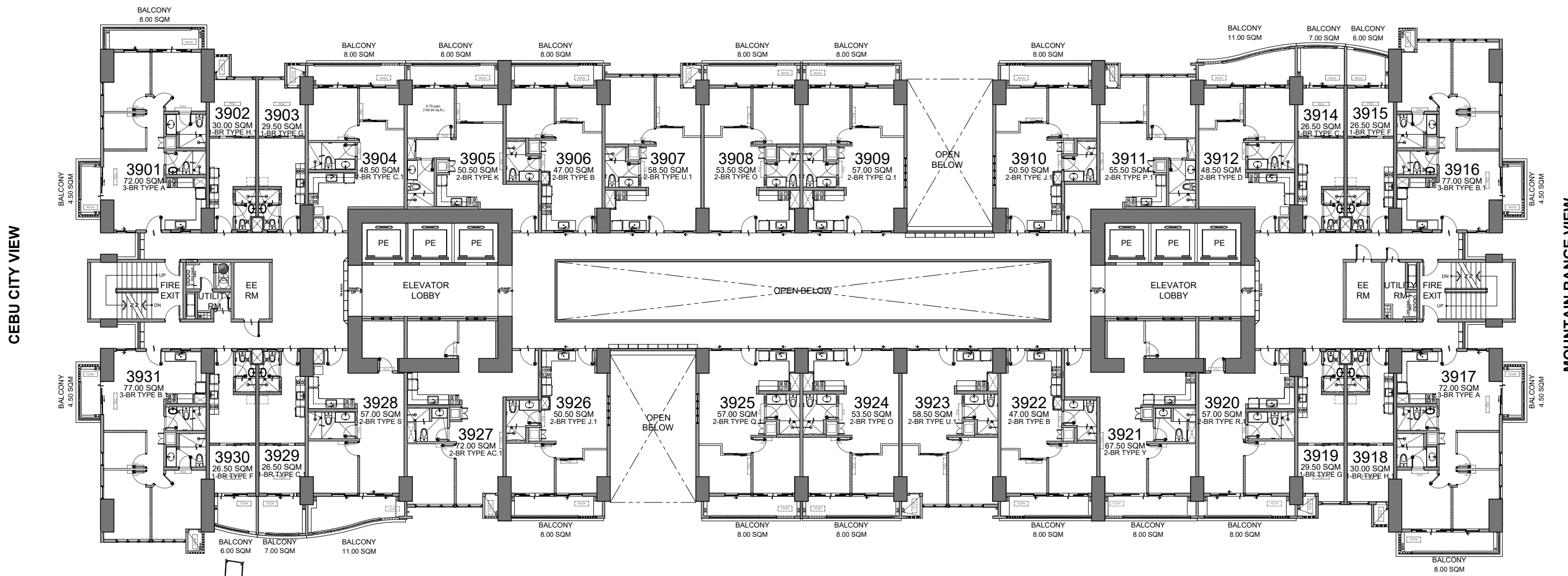


NOTED BY:	ADI	08/09
	PINKY	09 Aug'24
	ANADAM	8/9

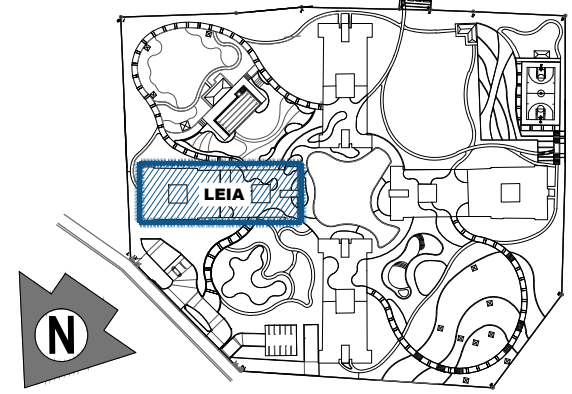


Disclaimer: Floor plans depicted in this material are for demonstration purposes only and should not be relied upon as final project plans. For announcement purposes only.

FACING AMENITIES
(MACTAN CHANNEL VIEW)



FACING AMENITIES
(MOUNTAIN RANGE VIEW)



KEYPLAN

LIST FOR POSSIBLE TANDEM UNITS:

- 3907 & 3908
- 3923 & 3924

NOTE:
Standard company policy regarding request for tandem shall apply.

LEIA
39TH FLOOR PLAN
SEPTEMBER 2024
PER MEMO REF. DE-24-09-002



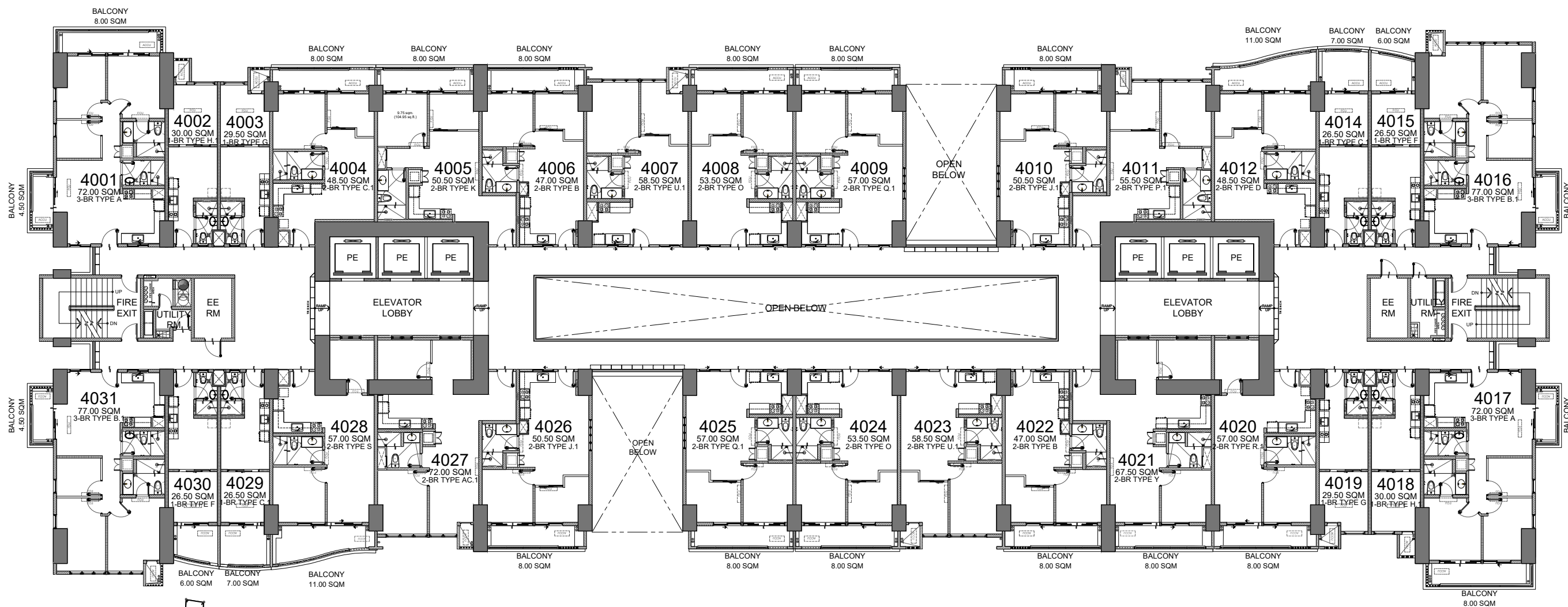
NOTED BY:	ADI	08/09
	PINKY	9 Aug '24
	ANA	8/9



Disclaimer: Floor plans depicted in this material are for demonstration purposes only and should not be relied upon as final project plans. For announcement purposes only.

AVAILABILITY PLAN

FACING AMENITIES
(MACTAN CHANNEL VIEW)



CEBU CITY VIEW

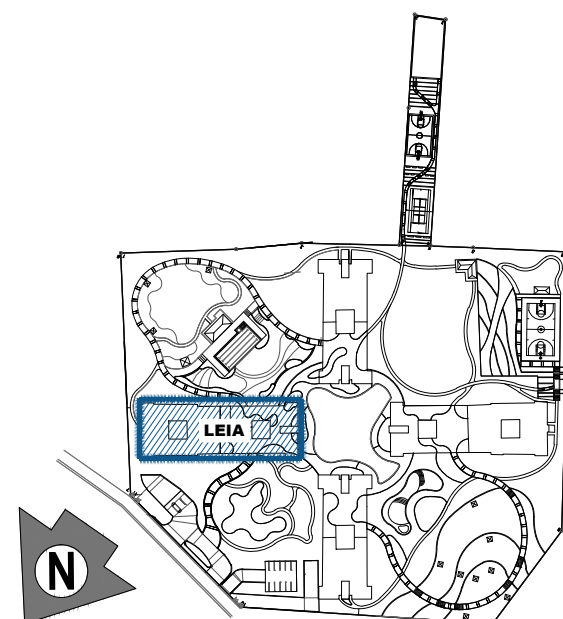
MOUNTAIN RANGE VIEW

FACING AMENITIES
(MOUNTAIN RANGE VIEW)

LIST FOR POSSIBLE TANDEM UNITS:

- 4007 & 4008
- 4023 & 4024

NOTE:
Standard company policy regarding request for tandem shall apply.



KEYPLAN

LEIA
40TH FLOOR PLAN
SEPTEMBER 2024
PER MEMO REF. DE-24-09-002



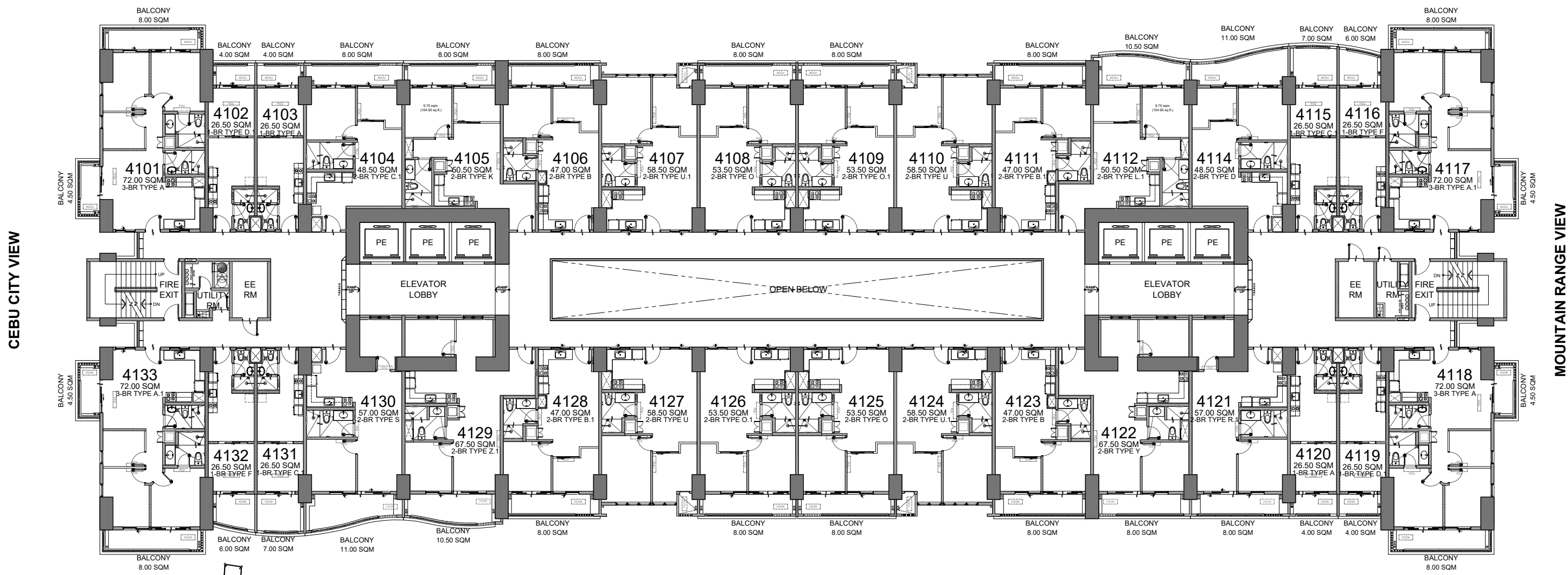
NOTED BY:	ADI	08/09
	PINKY	9 Aug '24
	ANA	8/9

Disclaimer: Floor plans depicted in this material are for demonstration purposes only and should not be relied upon as final project plans. For announcement purposes only.

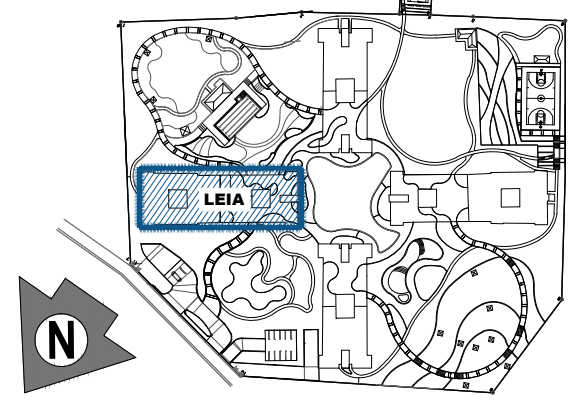


AVAILABILITY PLAN

FACING AMENITIES
(MACTAN CHANNEL VIEW)



FACING AMENITIES
(MOUNTAIN RANGE VIEW)



KEYPLAN

- LIST FOR POSSIBLE TANDEM UNITS:**
 4107 & 4108
 4109 & 4110
 4124 & 4125
 4126 & 4127

NOTE:
 Standard company policy regarding request for tandem shall apply.

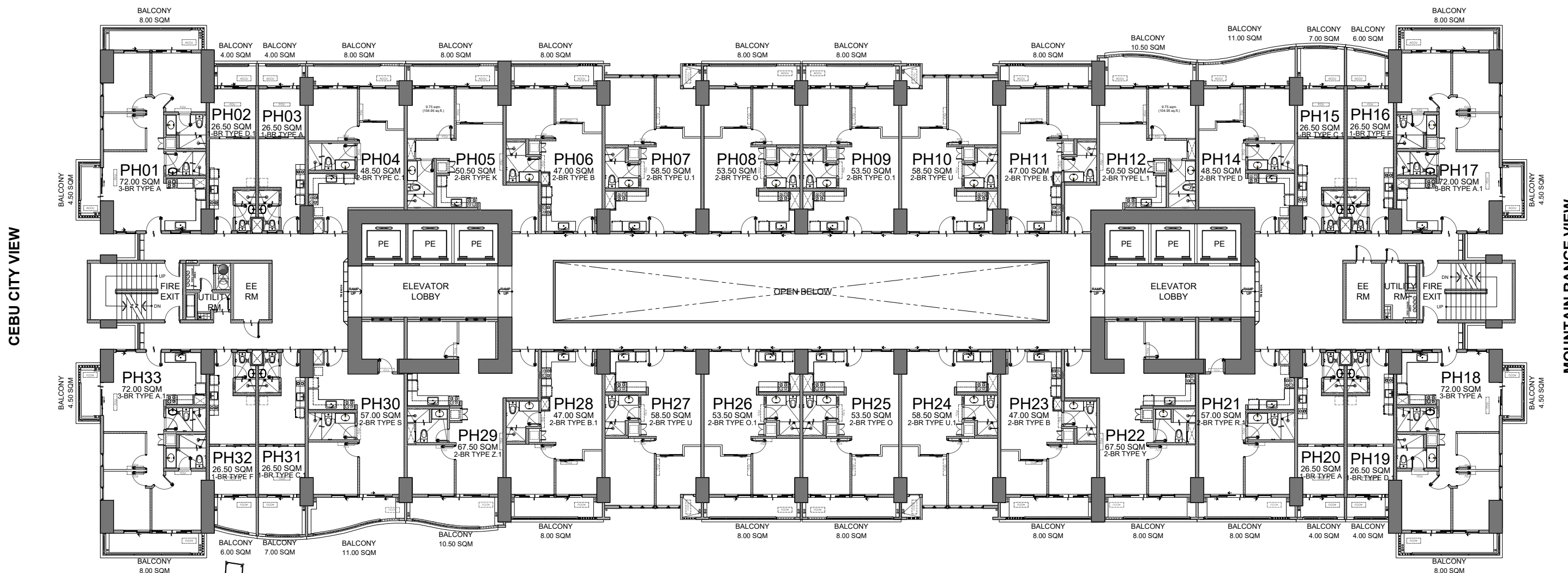
LEIA
 41ST FLOOR PLAN
 SEPTEMBER 2024
 PER MEMO REF. DE-24-09-002

DMCI HOMES Feels real good to be home	NOTED BY:	ADI	08/09
		PINKY	9 Aug '24
		ANA	8/9

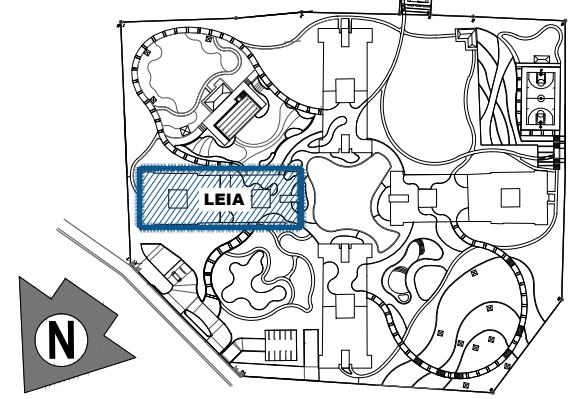


Disclaimer: Floor plans depicted in this material are for demonstration purposes only and should not be relied upon as final project plans. For announcement purposes only.

FACING AMENITIES
(MACTAN CHANNEL VIEW)



FACING AMENITIES
(MOUNTAIN RANGE VIEW)



LIST FOR POSSIBLE TANDEM UNITS:

- PH07 & PH08
- PH09 & PH10
- PH24 & PH25
- PH26 & PH27

NOTE:
Standard company policy regarding request for tandem shall apply.

LEIA
PENTHOUSE FLOOR PLAN
SEPTEMBER 2024
PER MEMO REF. DE-24-09-002

KEYPLAN



NOTED BY:	ADI	08/09
	PINKY	9 Aug '24
	ANA	8/9



Disclaimer: Floor plans depicted in this material are for demonstration purposes only and should not be relied upon as final project plans. For announcement purposes only.

AVAILABILITY PLAN